

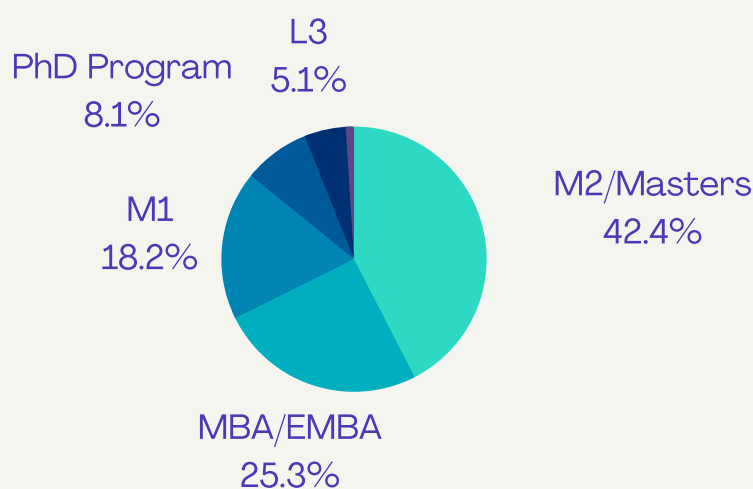


Results of the Notoriety Survey

You were **185** to respond

PROFILE PARTICIPATION

Students



How did you hear about the Learning Center?



71%

know that the the Learning Center is open 24/7

67%

agree that the Learning Center is easy to find

Your overall opinion of the Learning Center

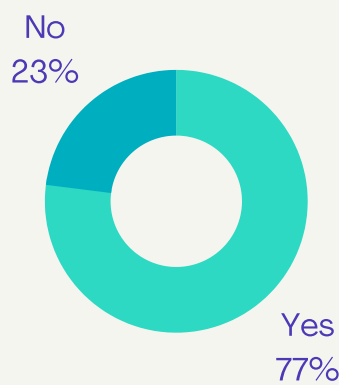
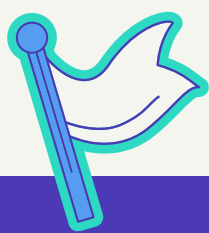


87% favorable opinion
of which **32% very favorable**



DO YOU VISIT

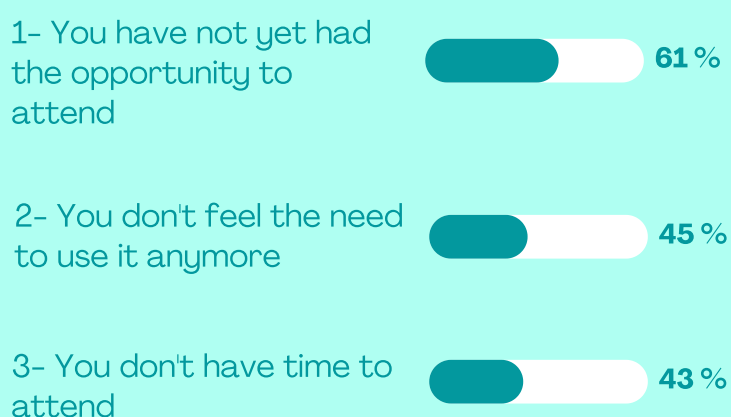
the Learning Center ?



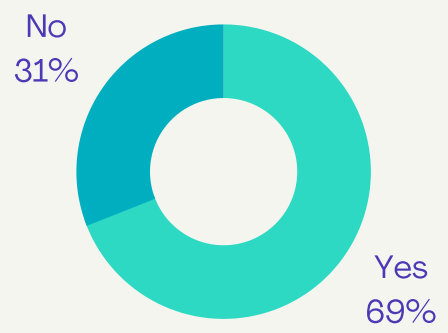
I go to the Learning Center



I do not go to the Learning Center



DO YOU CONSULT the Learning Center website?



I visit the Learning Center website

I do not visit the Learning Center website

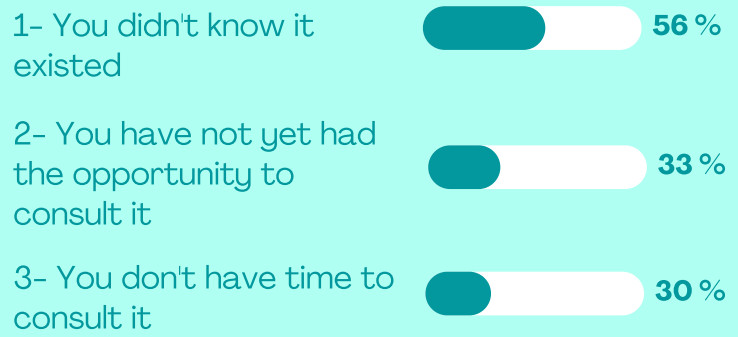
WHAT INFORMATION ARE YOU LOOKING FOR

on the Learning Center website?



WHY DON'T YOU VISIT OR NO LONGER VISIT

the Learning Center website?



HOW DO YOU RATE THE INFORMATION PROVIDED

to you on the Learning Center website?



89% overall satisfaction
of which 27% very satisfactory



YOU SOMEWHAT AGREE OR STRONGLY AGREE

that the Learning Center website is:

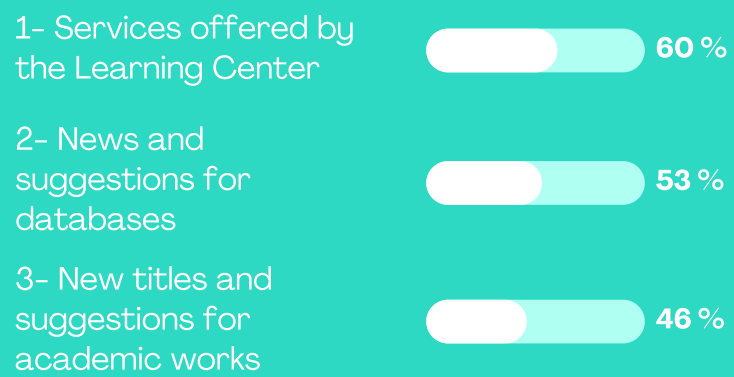


COMMUNICATION of the Learning Center

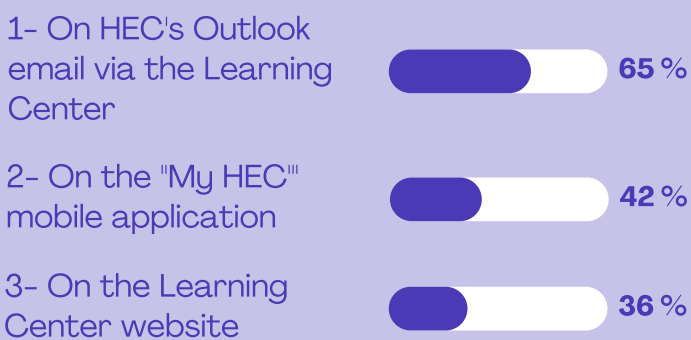
You somewhat agree or strongly agree that you are well informed about:



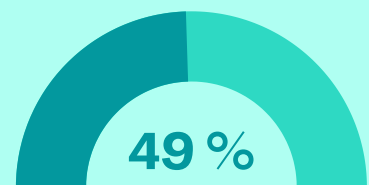
What information would you like to receive?



On which media(s) would you like to consult this information:



You would like to receive this information occasionally (once a month)



31% would like to receive them **regularly (once a week)**

If we produced a brochure, you would be willing to consult it:

